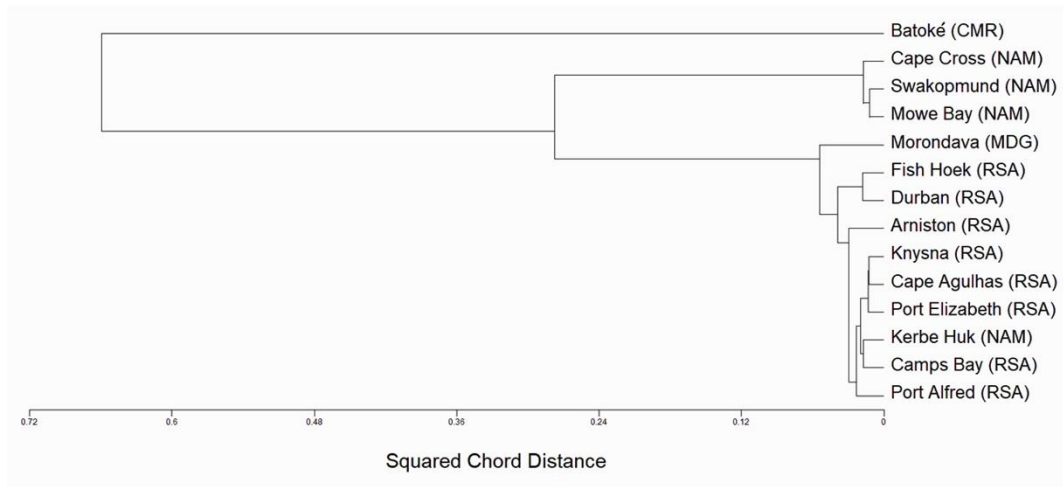


A



B

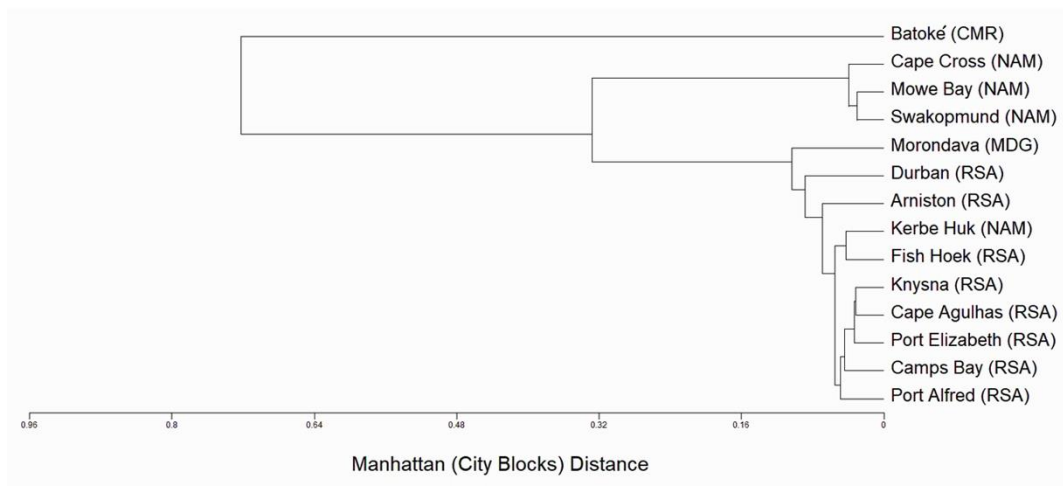


Fig. S1. Furthest neighbor topology trees depicting the hierarchical relationship between the 14 *Chthamalus dentatus* populations based on the SNP population method (see text): A. using the squared chord distance, B. using the Manhattan (city-blocks) distance. (CMR = Cameroon, MDG = Madagascar, NAM = Namibia, and RSA = South Africa).